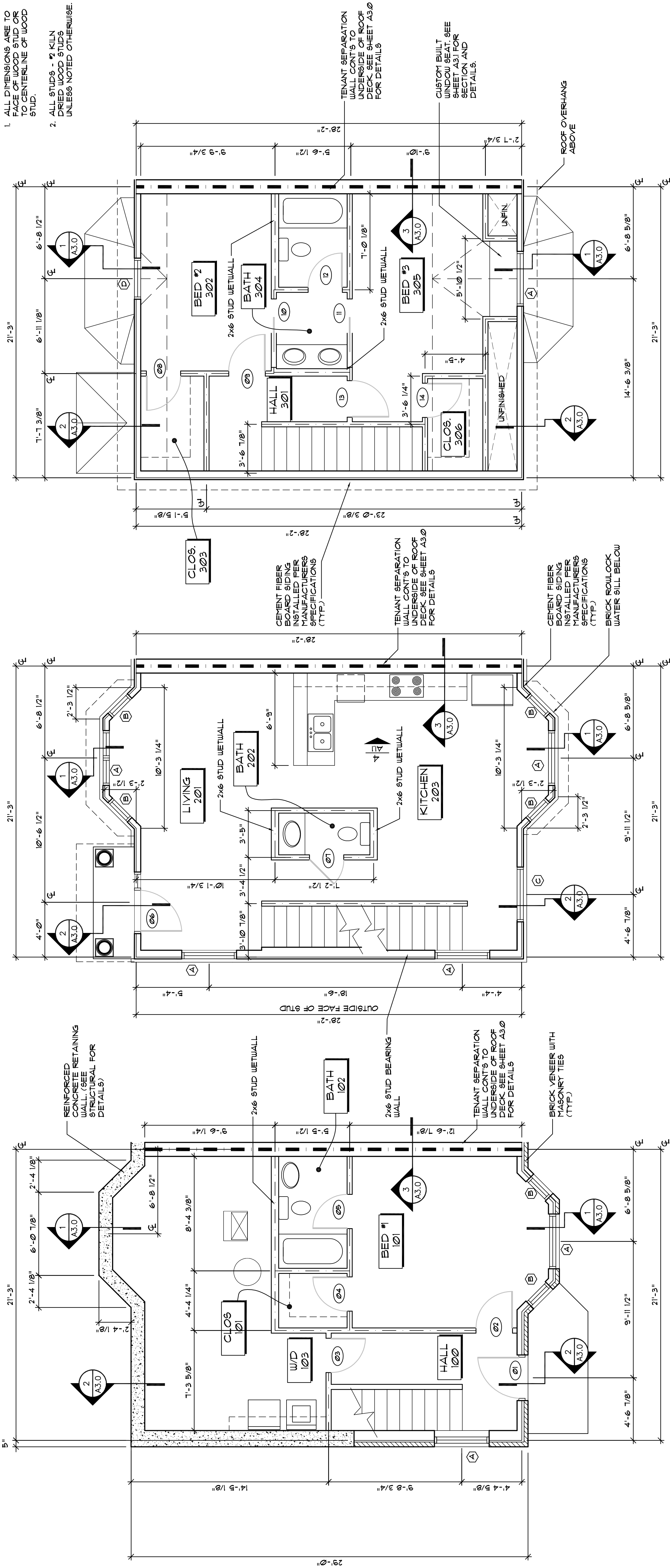


| | |
|-------------|---------------|
| DRAIN BY: | EMK |
| CHECKED: | WBA |
| DATE: | JAN. 27, 2006 |
| SCALE: | AS NOTED |
| JOB NUMBER: | 05-38 |
| REVISIONS: | - |

| | |
|-------------|-------------------------------|
| DESCRIPTION | MID-LEVEL ENTRY EXTERIOR UNIT |
|-------------|-------------------------------|

| | |
|-----------|-----|
| SHEET | A11 |
| OF SHEETS | 1 |

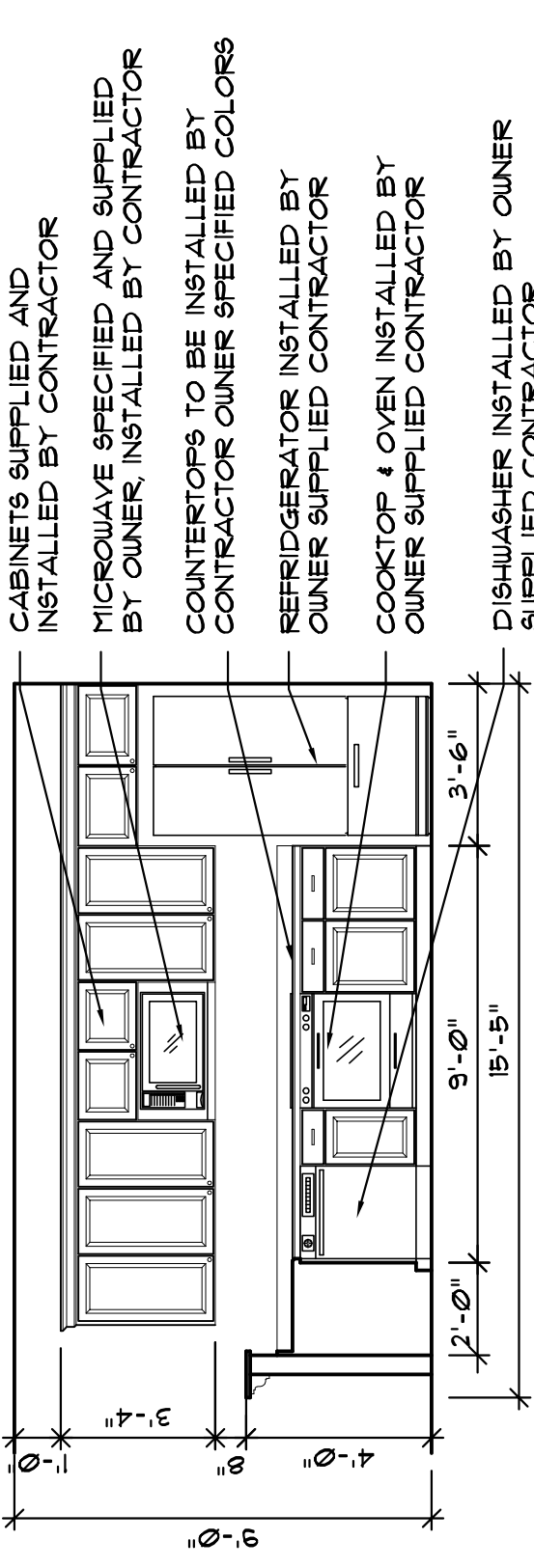
- DRAWING NOTES**
- ALL DIMENSIONS ARE TO FACE OF WOOD STUD OR TO CENTERLINE OF WOOD STUD.
 - ALL STUDS - 2x6 KILN DRIED WOOD STUDS UNLESS NOTED OTHERWISE.



UPPER LEVEL FLOOR PLAN
SCALE: 1/4" = 1'-0"

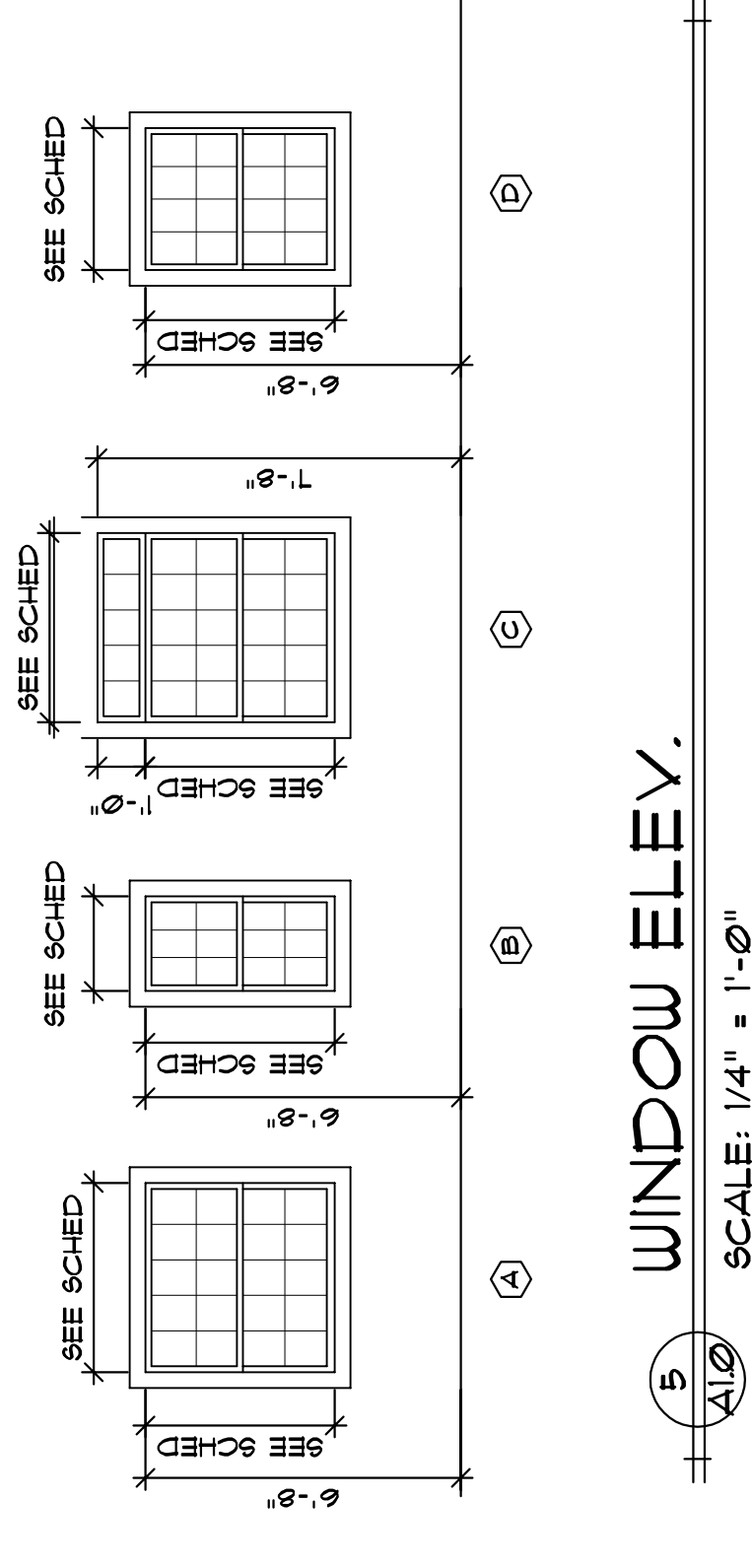
MID LEVEL FLOOR PLAN
SCALE: 1/4" = 1'-0"

LOWER LEVEL FLOOR PLAN
SCALE: 1/4" = 1'-0"



INT. ELEV.
SCALE: 1/4" = 1'-0"

| WINDOW AND FRAME SCHEDULE | | | | REMARKS |
|---------------------------|-------------------|-------------------------|-----------------|-------------------------|
| TYPE | SIZE WIDTHxHEIGHT | WINDOW GLAZING | FRAME MAT. FIN. | |
| A | 4'-0" x 4'-0" | INSUL. TINTED WD. PAINT | PAINT | W/ 12" H TRANSOM WINDOW |
| B | 2'-0" x 4'-0" | INSUL. TINTED WD. PAINT | PAINT | |
| C | 4'-0" x 4'-0" | INSUL. TINTED WD. PAINT | PAINT | |
| D | 3'-0" x 4'-0" | INSUL. TINTED WD. PAINT | PAINT | |



WINDOW ELEV.
SCALE: 1/4" = 1'-0"

| DOOR AND FRAME SCHEDULE | | | | | | | | | | REMARKS |
|-------------------------|----------|-------|------|--------|--------|------------|------|------------------|--|---------------|
| NO. | SIZE WxH | THICK | TYPE | MAT. | T-HOLD | FRAME MAT. | TYPE | HARDWARE SET NO. | | |
| 1 | 3'-0" | 1'-0" | D3 | 5TL | ALUMI | WD | F-1 | 2 | | EXTERIOR DOOR |
| 2 | 2'-6" | 6'-8" | D2 | SCW | -- | WD | F-1 | 4 | | |
| 3 | 2'-6" | 6'-8" | D2 | SCW | -- | WD | F-1 | 4 | | |
| 4 | 2'-6" | 6'-8" | D2 | SCW | -- | WD | F-1 | 3 | | |
| 5 | 2'-6" | 6'-8" | D2 | SCW | -- | WD | F-1 | 3 | | |
| 6 | 3'-0" | 1'-0" | D1 | 5TL/56 | ALUMI | WD | F-2 | 1 | | INSUL GLAZING |
| 7 | 2'-6" | 6'-8" | D2 | SCW | -- | WD | F-1 | 3 | | |
| 8 | 2'-6" | 6'-8" | D2 | SCW | -- | WD | F-1 | 4 | | |
| 9 | 2'-6" | 6'-8" | D2 | SCW | -- | WD | F-1 | 4 | | |
| 10 | 2'-6" | 6'-8" | D2 | SCW | -- | WD | F-1 | 3 | | |
| 11 | 2'-6" | 6'-8" | D2 | SCW | -- | WD | F-1 | 3 | | |
| 12 | 2'-6" | 6'-8" | D2 | SCW | -- | WD | F-1 | 4 | | |
| 13 | 2'-6" | 6'-8" | D2 | SCW | -- | WD | F-1 | 3 | | |
| 14 | 2'-6" | 6'-8" | D2 | SCW | -- | WD | F-1 | 3 | | |

- NOTE:**
- ALL DOOR HARDWARE TO BE EQUAL TO SCHLAGE MEDIUM RESIDENTIAL SERIES
 - ALL DOOR HARDWARE TO BE SUBMITTED BY CONTRACTOR TO ARCHITECT FOR APPROVAL PRIOR TO INSTALLATION

- HARDWARE SET NO. 3**
- 3 ea. HINGES 4 1/2" X 4 1/2"
 - 1 ea. STANDARD PRIVACY SET
 - 1 ea. WALL/FLOOR STOP AS REQD.
 - 1 ea. THRESHOLD X 36"
- HARDWARE SET NO. 4**
- 3 ea. HINGES 4 1/2" X 4 1/2"
 - 1 ea. STANDARD PASSAGE LOCKSET
 - 1 ea. WALL/FLOOR STOP AS REQD.
 - 1 ea. THRESHOLD X 36"

- HARDWARE SET NO. 1 (FRONT DOOR)**
- 3 ea. HINGES 3 1/2" X 3 1/2"
 - 1 ea. KEYED LOCKSET 4 DEADBOLT
 - 1 ea. WALL/FLOOR STOP AS REQD.
 - 1 ea. THRESHOLD X 36"
- HARDWARE SET NO. 2 (BACK DOOR)**
- 3 ea. HINGES 3 1/2" X 3 1/2"
 - 1 ea. KEYED LOCKSET 4 DEADBOLT
 - 1 ea. WALL/FLOOR STOP AS REQD.
 - 1 ea. THRESHOLD X 36"